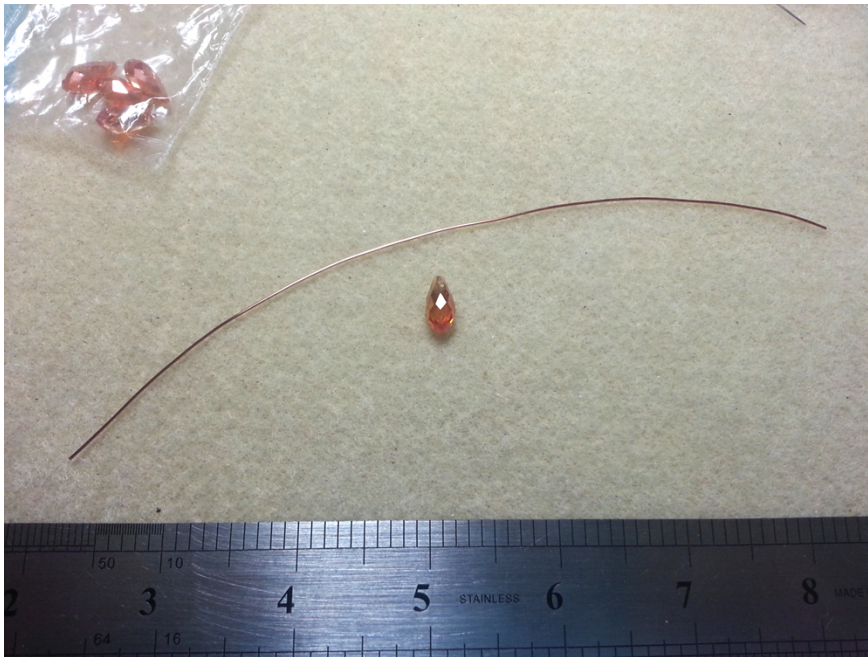


## How I Make Wire Wrapped Briolettes | by B.R.Kuhlman <http://www.mixedmayhemstudios.com>

I'm sure there are an assortment of different ways to go about doing this, but this is specifically how I make my wire wrapped briolettes. It's not super hard, but it can be a little unwieldy at first. Don't let that discourage you! Also, if your wraps are a little messy the first couple of times, just go with it. Messy wraps look just as awesome as my neatly controlled (see: OCD as heck) wraps. You'll also want to keep in mind, that the smaller the bead, the harder it is to wrap. This tutorial is also specifically for top drilled beads.

### Materials Needed:

- 22 ga wire
- 1cm briolette beads
- round nose pliers
- flush cutters
- Optional: I use loop making pliers and bent nose pliers to help make my initial loop in step 2, but you can do this without those tools if you don't have them.



**Step 1** | Select the bead you want to wrap, and cut a length of wire.

I am using 22ga copper wire. The wire I used for this bead was about 7 inches (17.78cm) long, and the bead itself was about 1cm in length.

You really want a little extra wire than what you're going to use so you have wiggle room for any mistakes.

It's better to overestimate the amount you need then end up needing more at the end; you'd have to start over from scratch if that happened. (This has happened to more more times than I care to recount!)



**Step 2** | Make a little loop at one end of the wire as though you're making an eye pin. This is going to be the "top" of your wire bead cap.

Pro tip! Try to conserve as much as you can of the length of the wire when doing this. You don't want to use up several inches of your wire just making this loop. :)



**Step 3** | Insert your handmade eyepin into the drilled point of the bead.

The thing to really pay attention here is the location of your eyepin loop. You don't want it flush against the side of the bead, you want it at the top so your bead can dangle the way it's supposed to.

To do that you'll have to allow a millimeter or two of space (the length between the hole and the very top of the briolette) before you bend the wire.

When you bend the wire you want it to bend it until the wrapped part of your eyepin sits on the very top of the bead.



**Step 4** | Now that you have your wire bent to sit on top of the briolette, take the other end of the wire and wrap it around the very bottom of the last wrap on your eyepin.

This will "tie off" your bead close. It can't slide off your wire anymore at this point. Technically, you could snip off your extra wire and stop here if you really wanted to.



**Step 5a** | This is where things can get a little tricky. You want to keep making those loops after that first one, but you want them to be flush with each other.

The easiest way to do this is to turn the bead between your fingers instead of trying to turn/wrap the wire. Rotate the bead, and not the wire, for a smoother look.

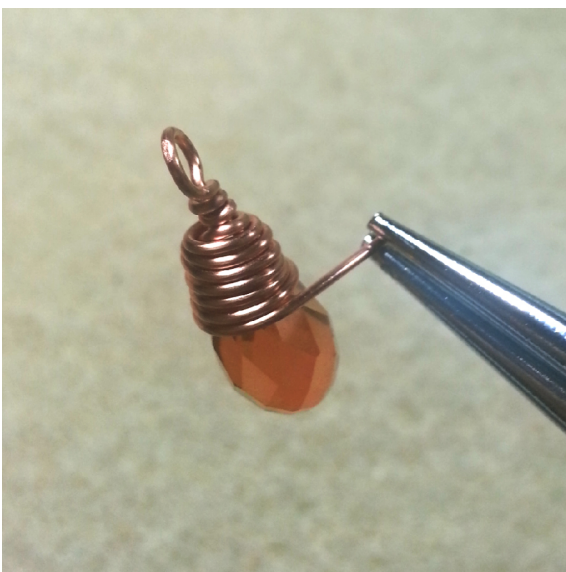


**Step 5b** | Keep turning the bead into the wire to get as many wraps as you deem fit. I usually want at least the drill holes of the bead covered up.



**Step 6** | Cut off your extra wire, but leave a little bit to make a cute little loop on the front.

This isn't necessary, but I almost always do it. I've seen other tutorials say that they try to tuck the wire underneath the other wraps, but that never seems to work out for me; I just end up ruining my wraps and get really frustrated.



**Step 7** | Use your round nose pliers to make a little loop as though you're about to start a spiral/swirl in the wire. Think of this little loop like you're making a tiny, non-wire wrapped eyepin.

Once you've made the loop, you'll want to use your fingers (or very carefully use your pliers) to flatten it against the surface of your bead.

**Congratulations! You should now have a wire wrapped briolette!**



Looking for more content like this?  
Visit my blog at [www.mixedmayhemstudios.com](http://www.mixedmayhemstudios.com). I have more tutorials on the way. ♥